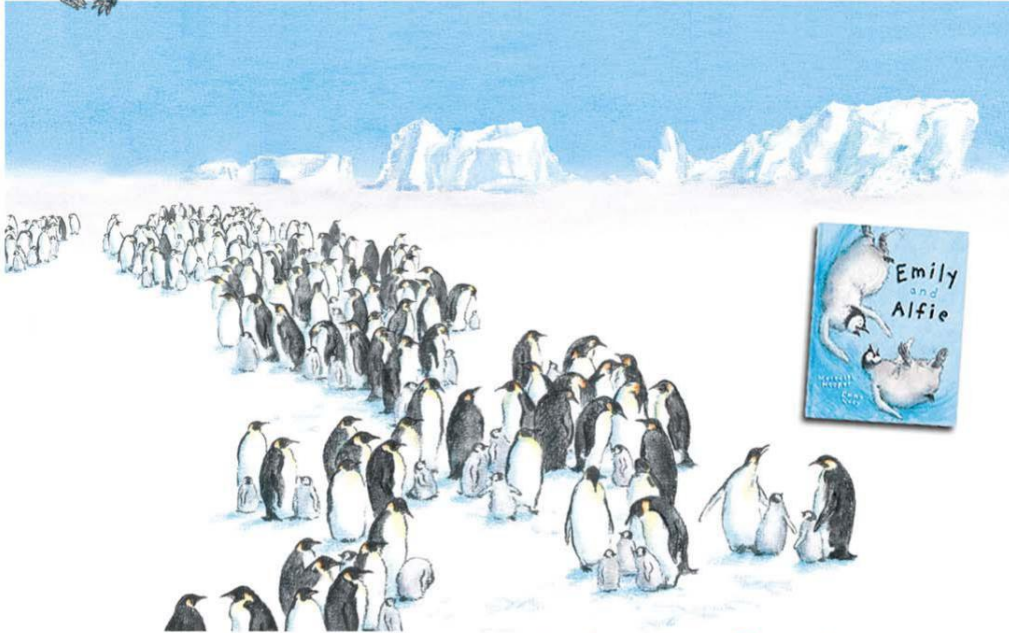
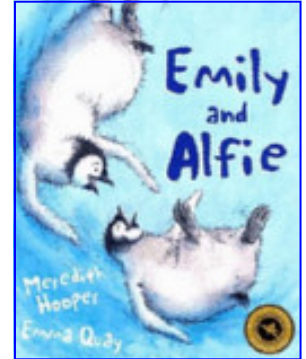




PUZZLE CORNER No.01 SPOT THE DIFFERENCE

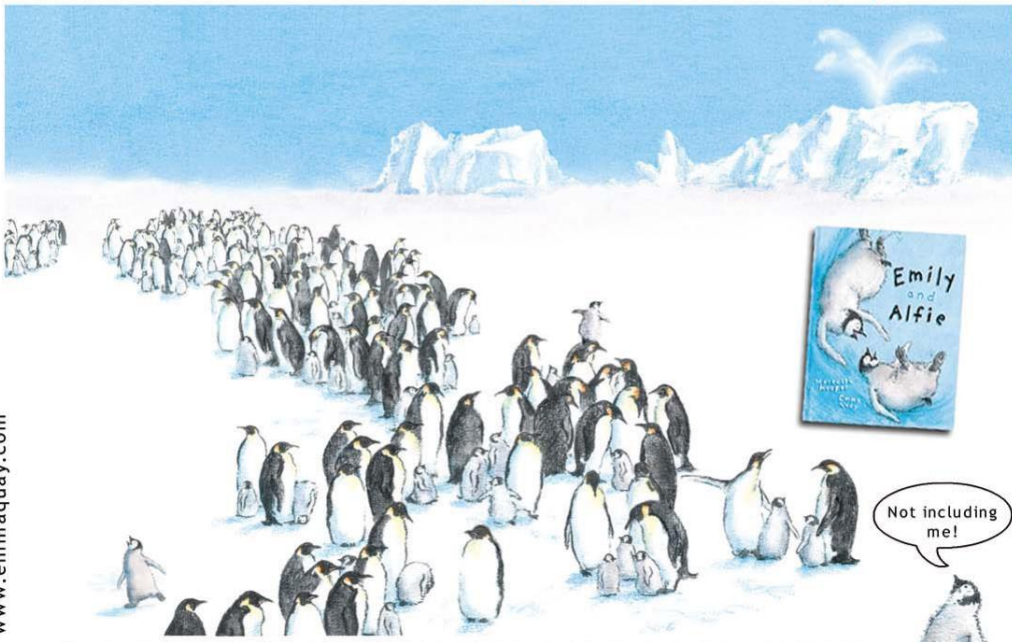


Emily and Alfie SPOT THE DIFFERENCE



From the picture book by Meredith Hooper and Emma Quay

Far, far away near the bottom of the world, where the penguins live, a great white iceberg rose above the ice. In its side, like a whale's watchful eye, was an ice cave. Emily and Alfie are best friends looking for adventure. While their mothers are away fishing and their dads are chatting about the weather, Emily and Alfie cannot resist the shiny iceberg beckoning to be explored... Fall in love with the extremely adorable Emily and Alfie. Their sense of adventure will delight any young child. From the author and illustrator of Thank you for my Yucky Present, a CBCA Notable book for 2003.



www.emmaquay.com

Can you spot 10 differences between these two colonies of emperor penguins? Look closely, it's quite hard!

This puzzle created for YABBA 6 July 2011 with permission from Emma Quay

YABBA, PO Box 238, KEW VIC 3101

ABN 12 765 661 851 phone: 03 9889 7749 email yabbabooks@yahoo.com

www.vicnet.net.au/~yabba